

CERTIFIED LAND CORNER RECORDATION

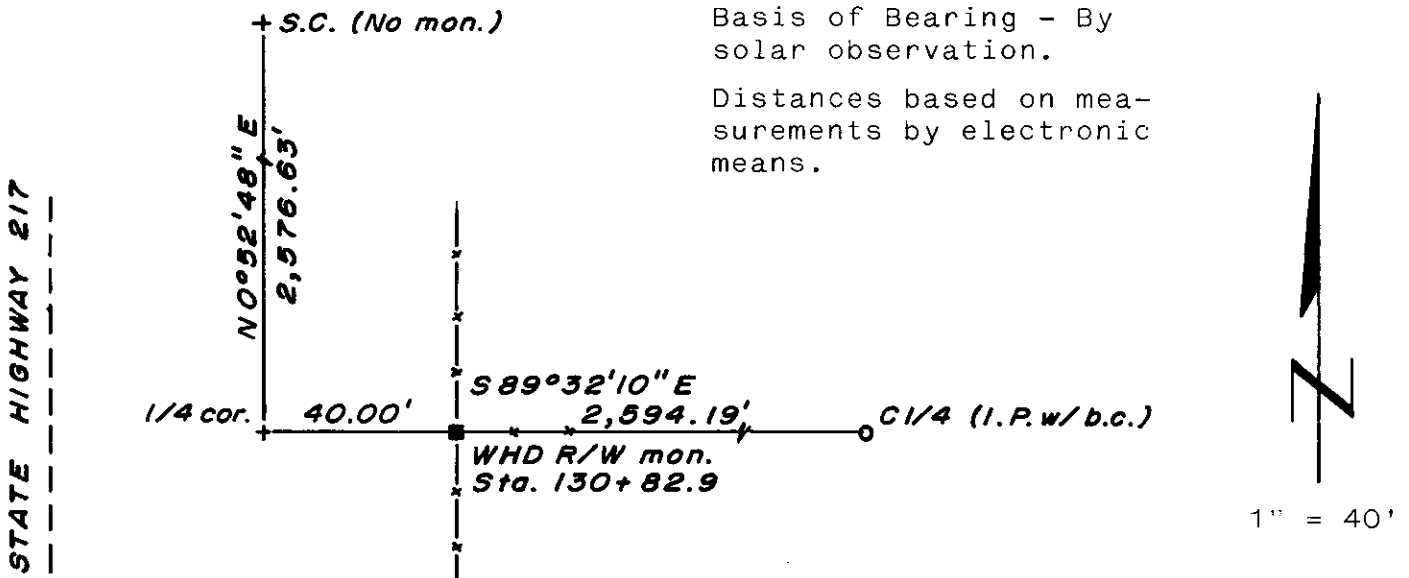
DESCRIPTION OF CORNER EVIDENCE FOUND, AND ORIGINAL RECORD (If known)

LOCATION Corner position determined from Wyoming Highway Department
 R/W monument, as shown.
 $\frac{1}{4}$
 S.3 S.2 G.L.O. record - 1871 contract survey by Edwin James -
 T.13N., R.64W. Set a Sand Stone 22 x 12 x 10 for quarter section corner.
 6th P.M.

DESCRIPTION OF MONUMENT AND ACCESSORIES ESTABLISHED
 TO PERPETUATE THE ORIGINAL LOCATION OF THIS CORNER:

At the corner: No monument set (corner falls in borrow pit of State Highway
 217).
 Accessories None set. R/W monument bears as shown in sketch.

SKETCH, WITH COURSE AND DISTANCE TO ADJACENT CORNER IF DETERMINED IN THIS SURVEY.
 (May Sketch or Paste Reproduction on Reverse Side.)



R. L. Hudson certify that I have carefully performed ~~or reviewed~~ the work done on the diagrammed corner as reported on this recordation form and approve the same.

R. L. Hudson Wyoming L.S. No. 519
 Signature of Surveyor Registration No.

STATE OF WYOMING,
 Office of Clerk and Recorder,
 County of *Laramie*

This "corner record" was filed for record on the *18* day of *July* , 19 *77* , was noted on the cross-index plat and is assigned page No. _____, in book No. _____.

Janet C. Withead
 County Official

Cross Index No. <u> <i>C-17</i> </u>	T. _____	R. _____	Mer.
	T. <u> <i>13</i> </u>	R. <u> <i>64</i> </u>	Mer.
	T. _____	R. _____	Mer.
	T. _____	R. _____	Mer.
	T. _____	R. _____	Mer.
	T. _____	R. _____	Mer.

446772

Micrographed _____
Indexed: *4* _____
Filed _____
Assessor _____